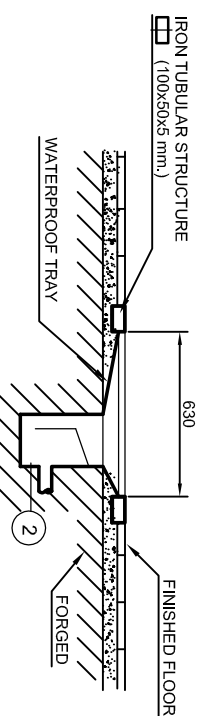
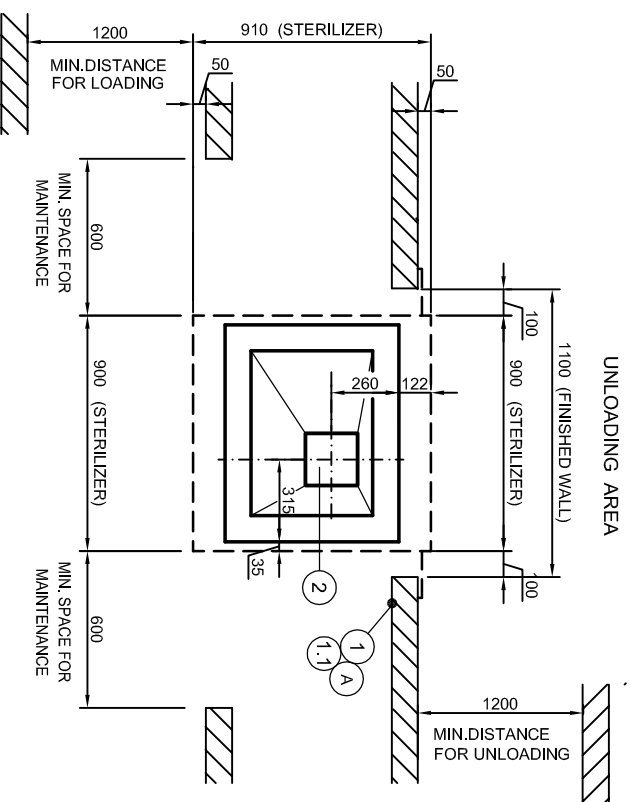


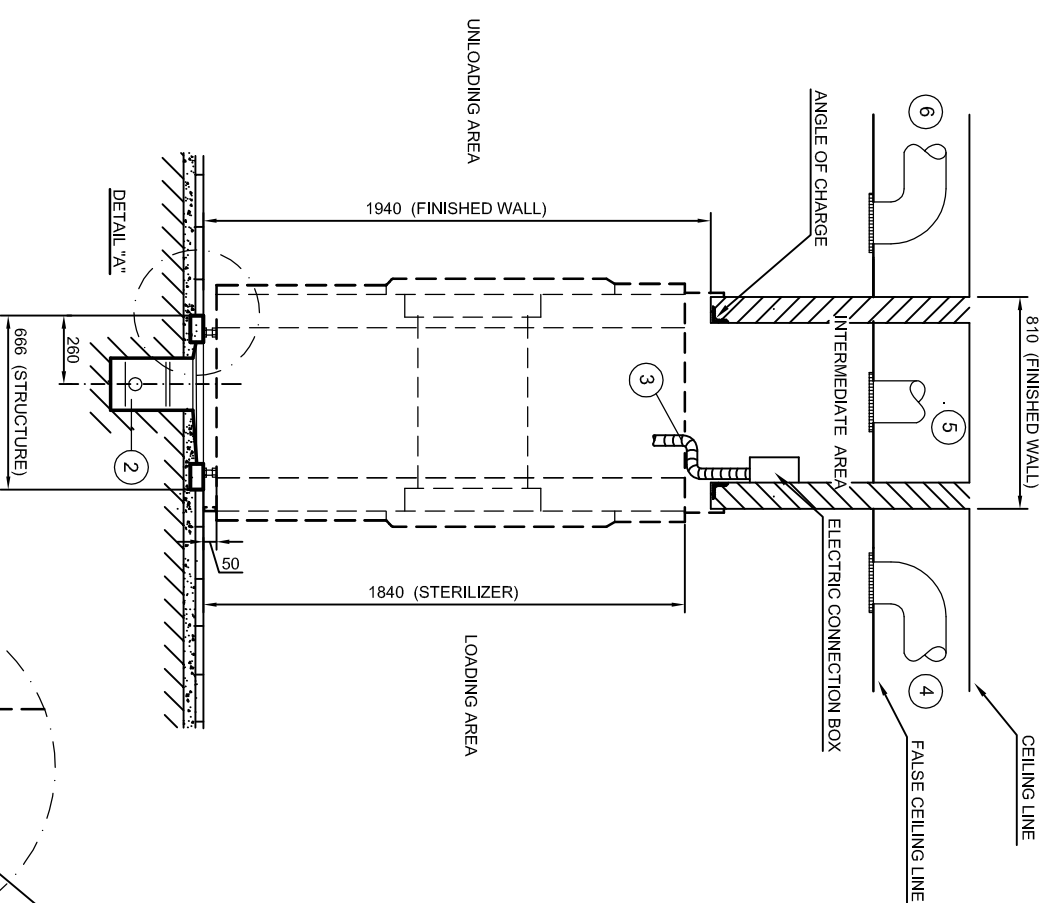
LOADING FRONT ELEVATION



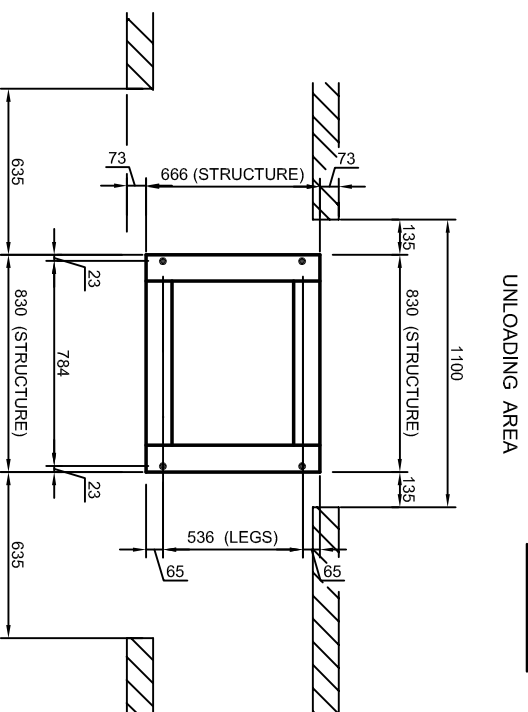
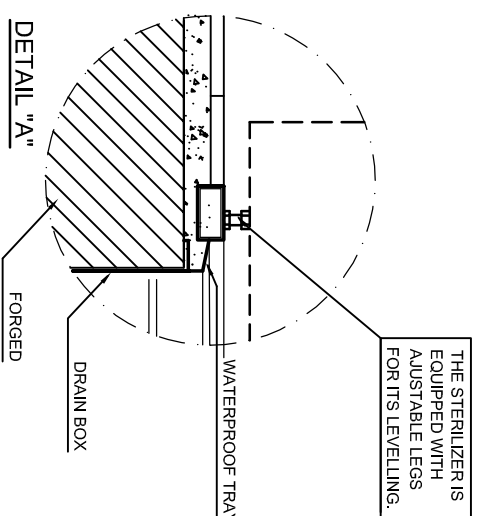
TRANSVERSAL SECTION



GROUND VIEW



LONGITUDINAL SECTION



SITUATION LEGS IRON TUBULAR STRUCTURE (100x50x5 mm).

**WARNING!** THIS DRAWING GIVES THE BASIC INSTRUCTIONS FOR PROVIDING THE SUPPLY SERVICES AND ENVIRONMENT THAT GUARANTEES THE PROPER FUNCTIONING OF THE PRODUCTS FROM ANTONIO MATACHANA, S.A. THE PURCHASER AND THE PURCHASERS INSTALLERS SHALL PROVIDE THE SUPPLY LINES NECESSARY FOR EACH PRODUCT IN ACCORDANCE WITH ESTABLISHED APPLICABLE NORMS AND REGULATIONS. ANTONIO MATACHANA, S.A. DECLINES ALL RESPONSIBILITY FOR FAILURE TO COMPLY WITH SUCH LAWS AND REGULATIONS.

**IMPORTANT**  
MATACHANA RESERVES THE RIGHT TO MODIFY THIS DRAWING ACCORDING TO THE TECHNICAL DEVELOPMENT OF THE EQUIPMENT.

A.- AIR INTAKE FREE OF IMPURITIES  $\phi$  3/8" G., FILTERED AND REGULATED AT A PRESSURE OF 5-7 bar, FLOW OF 0.0083 Nm<sup>3</sup>/min, APPROX. CYCLE CONSUMPTION 0.5 Nm<sup>3</sup>, PLACED ON THE WALL WITH BUILT-IN AND ACCESSIBLE MASTER KEY.

**NOTE.-**  
THIS INTAKE WILL BE PROVIDED ONLY IF THE CUSTOMER HAS AIR NETWORK.

- 1.- COLD SOFTWATER INTAKE OF  $\phi$  3/4" G., SUPPLIED AT TEMPER. OF 15 °C. FOR A FLOW OF 12 ltrs/min, CONSUMPTION PER CYCLE 260 lts., PRESSURE OF 3.6 bar, HARDNESS 1.5 ° HF, pH 7.9 PLACED ON THE WALL, PROVIDED WITH BUILT-IN AND ACCESSIBLE MASTER KEY. THE CHLORIDES LEVEL WILL BE < 110 mg/l. (WATER FOR CONDENSED CIRCUITS AND VACUUM).
- 1.1.- COLD TREATED WATER INTAKE OF  $\phi$  3/4" G., SUPPLIED AT TEMPER. OF 15 °C., CYCLE CONSUMPTION OF 15-20 ltrs., PRESSURE OF 3.6 bar, HARDNESS  $\leq$  2 ° HF, pH 5-7, WITH CONDUCTIVITY  $\leq$  15  $\mu$ S/cm, AND ACCESSIBLE MASTER KEY PLACED ON THE WALL (STEAM GENERATOR WATER SUPPLY).

**NOTE:**

EACH TIME THE STEAM GENERATOR IS EMPTIED FOR CLEANING OR MAINTENANCE, A FURTHER 20 ltrs. OF WATER ARE NEEDED TO FILL IT UP AGAIN.

- 2.- SYNCHONIC DRAIN WITH TUBE OF OUTLET TO THE GENERAL NETWORK OF 2" G., ANTICORROSIVE, MUST BE ABLE TO RESIST A TEMPERATURE OF 135 °C.
- 3.- ELECTRIC INTAKE III-PHASE + PE FOR 20.5 kW, WITH ONE WIRE 2.5 mts. LONG. (GENERAL POWER SUPPLY TO THE STERILIZER)
- 4.- CEILING MOUNTED AIR EXTRACTION WITH GRILLE DRAW 160 Kcal/h. (LOADING AREA)
- 5.- CEILING MOUNTED AIR EXTRACTION WITH GRILLE DRAW 250 Kcal/h. (INTERMEDIATE AREA)
- 6.- CEILING MOUNTED AIR EXTRACTION WITH GRILLE DRAW 140 Kcal/h. (UNLOADING AREA)

**!!!VERY IMPORTANT!!! ENVIRONMENTAL CONDITIONS IN THE STERILIZER ZONE**  
IN THE INTERMEDIATE AREA INDICATED IN THE DRAWING, THE ENVIRONMENTAL TEMPERATURE MUST BE  $\leq$  40° C AND THE RELATIVE HUMIDITY  $\leq$  85 %  
TO KEEP THESE CONDITIONS IN THE STERILIZER ZONE AND DEPENDING ON THE Kcal. LOST BY THE EQUIPMENT INDICATED IN THE ITEMS 4, 5, & 6, WE SUGGEST THAT THE EXTRACTOR AND THE DIAMETER OF THE EXTRACTION TUBE ARE CALCULATED AND MADE BY AN SPECIALIZED COMPANY.

**ATTENTION:**

- THE ELECTRIC WIRES TO THE STERILIZER, SHOULD BE DRIVEN BY AN HERMETIC CONDUIT.
- THE INDICATED AIR EXTRACTION IS ONLY TO DISSIPATE THE HEAT OF THE MACHINE AND MUST BE INDEPENDENT OF THE CLIMATE CONTROL SYSTEM OF THE ZONE.
- STERILIZER CHAMBER DIMENSIONS : 480 x 480 x 670 mm. (WIDTH x HEIGHT x DEPTH).
- STERILIZER OUTSIDE DIMENSIONS : 900 x 1840 x 910 mm. (WIDTH x HEIGHT x DEPTH).
- ALL THE OUTLETS MUST BE INSTALLED ACCORDING TO THE DIFFERENT APPLICABLE NORMS.
- IF THERE IS NO FALSE CEILING, THE AIR EXTRACTION, MUST BE INSTALLED IN THE WALL, AND HAVE THE SAME POWER AS THOSE OF THE FALSE CEILING BE CARRIED OUTSIDE THE BUILDING, AND BE EQUIPPED WITH A GRILLE
- THE INSTALLATION UP TO THE MACHINE AS WELL AS THE SUPPLY OF ACCESS KEY ACCORDING TO THE SPECIFICATIONS INDICATED IN THE DRAWING, ARE CHARGEABLE TO THE PURCHASERS
- IF DURING THE INSTALLATION OF THE VARIOUS INTAKES INDICATED IN THE DRAWING, THERE IS ANY KIND OF PROBLEM, WE ADVISE THE INSTALLERS TO CONTACT OUR TECHNICAL ASSISTANT SERVICE FOR SPECIAL INSTRUCTIONS.
- THE MEASUREMENTS OF THIS DRAWING ARE CONSIDERING FINISHED WALLS.
- THE DAILY LEVEL OF NOISE EQUIVALENT  $\leq$  65 db (A).
- THE SPACES OF MAINTENANCE MUST BE SUFFICIENTLY ILLUMINATED.

00	04-05-05	R.N.	E.G.	J.C.	Initial Release
REVISION	DRAWING	T.A.S.	DIVISION	MODIFICATION	
<p><b>matlachana</b></p> <p>DESCRIPTION: INSTALLATION DRAWING FOR: STEAM STERILIZER MOD. SC500E-2</p> <p>FILE: SCALE: 1:20</p> <p>PASS: E.C. CAD DRAWING: 78058E01</p>					
<p>ISO 9001 n° 945793</p> <p>CODE: 78058 / 78058.2</p>					