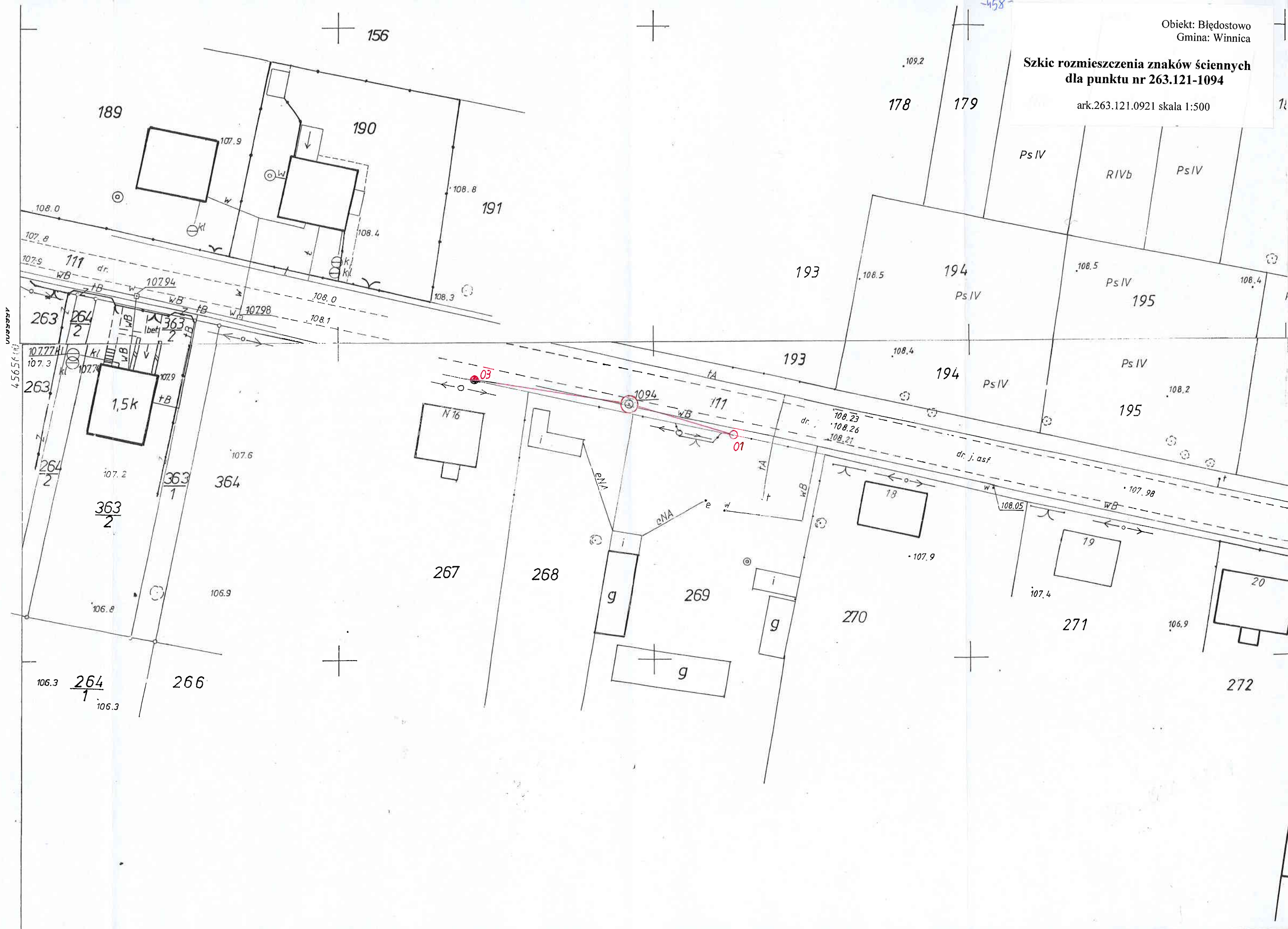


Szkie rozmieszczenia znaków ściennych dla punktu nr 263.121-1094

ark.263.121.0921 skala 1:500



-458-

156

109.2

178

179

189

190

191

193

194

195

108.4

108.0

107.8

111 dr.

107.94

108.0

108.3

45654-10

263

264

363

107.77

107.3

107.7

1.5k

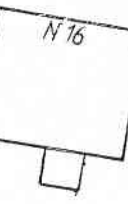
107.9

107.6

364

106.9

106.8



267

268

g

269

i

g

270

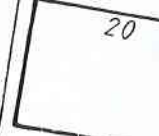


107.9



107.4

271



106.9

272

106.3

264

266

106.3

1094

111

108.23

108.26

108.21

dr. j. asf

107.98

108.05

w

wB

03

01

TA

TA

wB

w

wB

108.05

107.4

106.9

+

+